



Presentation

This document shall be treated as confidential. It has been compiled for the exclusive, internal use by ILERI Group and is not complete without the underlying detail analyses and the oral presentation.
It may not be passed on and/or may not be made available to third parties without prior written consent from Suleyman Isik





Outline

☐ About Us

Who we are & Quick Overview
Our Mission & Vision
Industries
Customers

☐ Product Programme

Steering Solutions
Access Controls
Motion Controls
Welded Fabrication

☐ Capabilities

Design-Engineering and PV&V
Production
Quality Infrastructure

☐ Global Footprint Locations

☐ Thank you. Q&A





About Us





Quick Overview

- ☐ Founded in 1978
- ☐ 200 Employees – Agile Organisation
- ☐ Supplier to more than 70 OEMs
- ☐ Diverse industry experience
- ☐ OEM driven company
- ☐ Product Innovator & Process Specialist
- ☐ Mechanical and Electromechanical Product Categories
- ☐ Mainstream OEM customer base





Our Vision, Mission and Values

- ❑ Our **vision** is to be a Global company innovating advanced Electromechanical and Mechatronic solutions.
- ❑ Our **mission** is to innovate control technologies to make mobility universally safe and comfortable.
- ❑ Our **values** are:
 - **Integrity** We will walk the talk. We commit to deliver excellent work in a timely manner.
 - **Customer-focused** We are successful when our customers are successful We believe we have common benefits with our customers
 - **Respect for the Individual** We respect to the individual. We care about safety and comfort of work environment. We encourage diverse viewpoints
 - **Transparency** We will communicate sincerely and openly. We accept criticism with appreciation
 - **Team Spirit** We believe team spirit is the key for our success
 - **Social Impact** We will provide value to people and environment. We will openly deliver our intellectual capital for sustainability. We will act to minimise environmental impact





Industries

Main industries we are active are:

- ☐ Aerospace
- ☐ Agriculture
- ☐ Armored Vehicles
- ☐ Automotive
- ☐ Commercial Vehicles
- ☐ Construction
- ☐ Material Handling





Customers

We proudly work with more than 70 OEMs in multiple industries across the Globe.
Here is a brief selection of major reference industry customers





Product Programme



Steering Solutions



Access Controls



Motion Controls



Welded Fabrication





Outline

□ About Us

Who we are & Quick Overview
Our Mission & Vision
Industries
Customers

□ Product Programme

Steering Solutions
Access Controls
Motion Controls
Welded Fabrication

□ Capabilities

Design-Engineering and PV&V
Production
Quality Infrastructure

□ Global Footprint

Getting Global
Locations

□ Thank you. Q&A



Steering Solutions

- ❑ Adjustable for tilt and telescope to ISO Standards or to exact Customers-Specific Applications
- ❑ Adjustable with Single Lever Manual Clamping; Pneumatic Clamping or Gas Strut
- ❑ Mounting options are Bulkhead, Driver Workstation or Pedestal
- ❑ Modular Cluster and Switchboard Options
- ❑ Testing and Validation to the Highest Standards and to exact customer specifications
- ❑ A variety of On and Off-Highway applications



Closure Systems

- ☐ Keypad
- ☐ Door Handle
- ☐ Latch
- ☐ Striker
- ☐ Door Hold-Back
- ☐ Window stays
- ☐ Window Handle
- ☐ Grab Handle
- ☐ Specialty Hinge





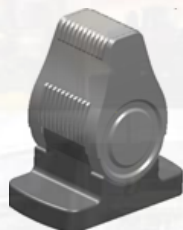
Motion Control Solutions Mechanical

- ☐ Handbrakes
- ☐ Multiple-Lever Assy
- ☐ Hand Throttles
- ☐ FNR Levers
- ☐ PTO Levers
- ☐ Shifters
- ☐ Complete Firewall and Pedal Assy



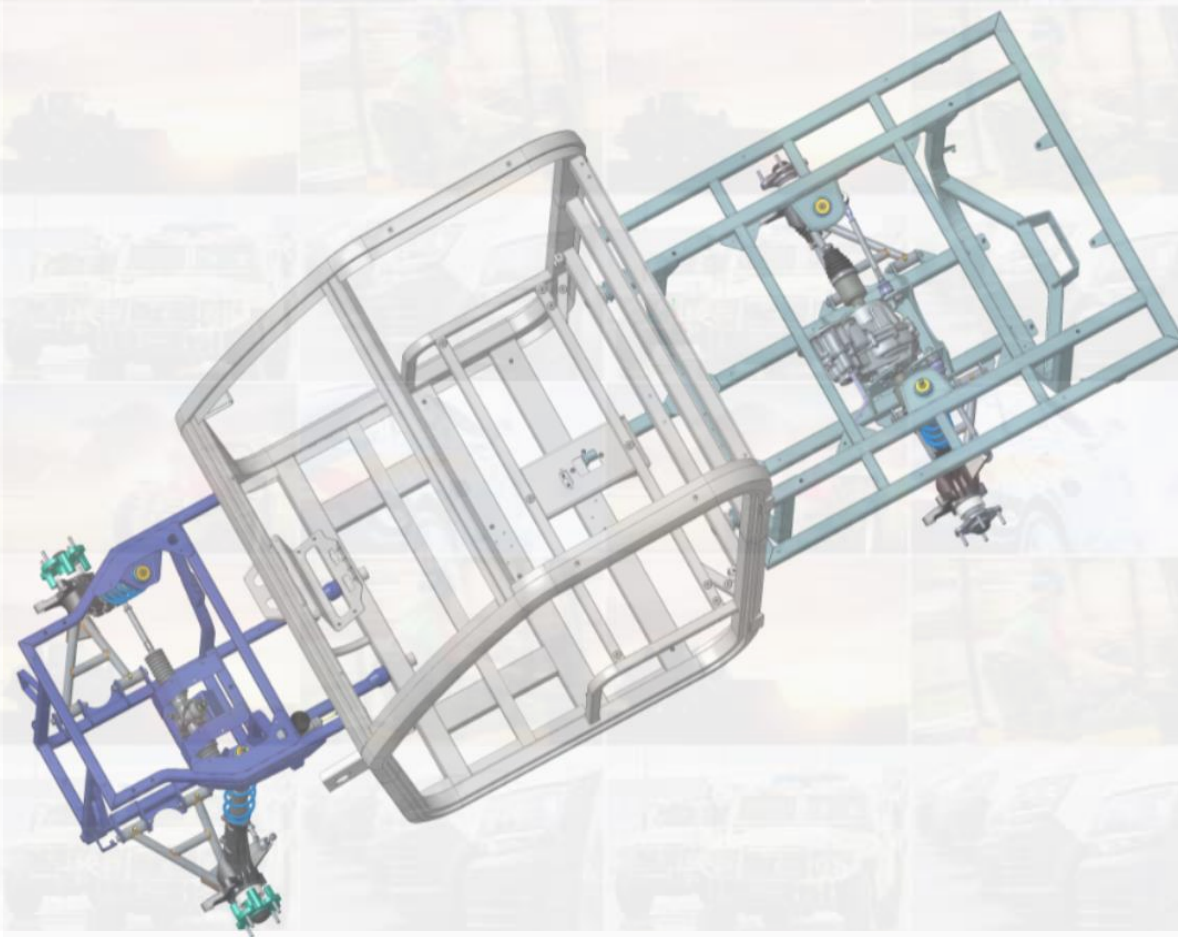
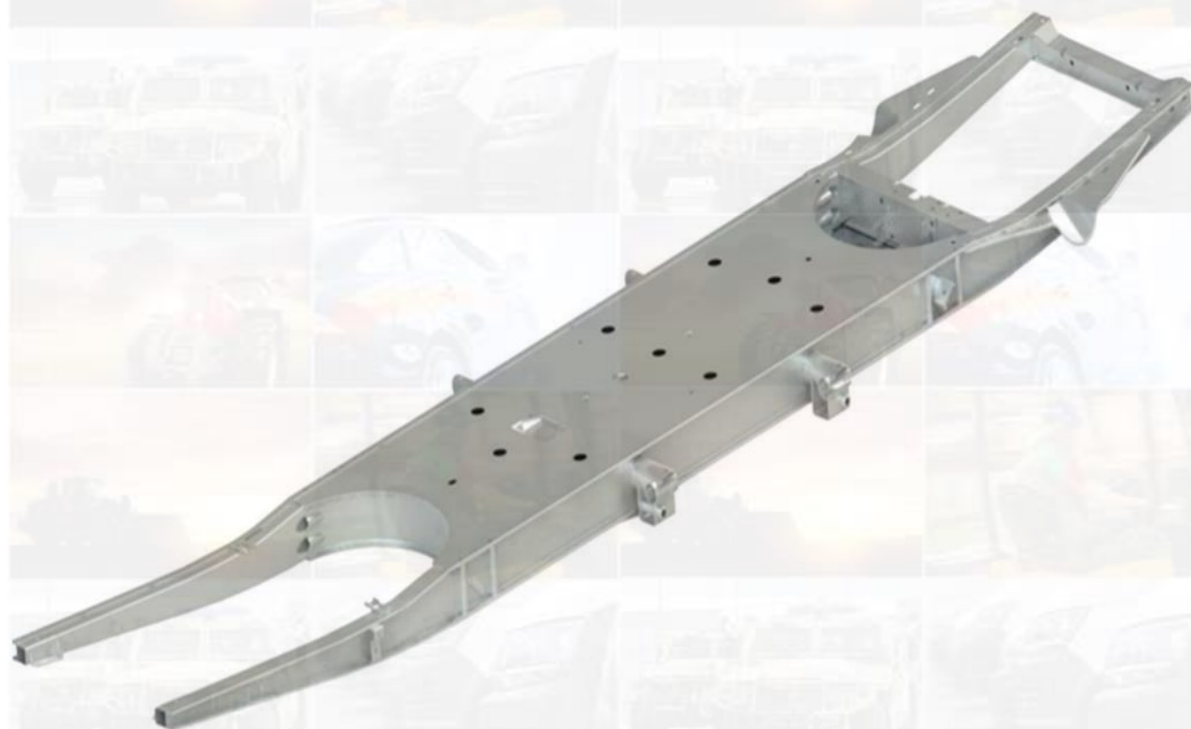
Motion Control Solutions Electromechanical

- ☐ Armrest Systems
 - ☐ Handbraking Systems
 - ☐ Hand Throttles
 - ☐ Accelerator Pedals
 - ☐ Fingertip Switch
 - ☐ and, Angle Sensor
- Assisted Multiple Control Solutions



Welded Fabrication

- ☐ Vehicle Frame
- ☐ Car Chassis





Capabilities





Design-Engineering and PV&V*

Best-in-class engineering and development ability to solve problems through design, modelling, prototyping and testing.

☐ Product Engineering:

Entire process of creating a product, from ideas and innovation through systems engineering to testing and simulation in a close partnership with our customers.

☐ Process Engineering:

- ☐ APQP process integration
- ☐ Building Tools and Equipments
- ☐ Developing and Validating Product and Manufacturing Process
- ☐ Initial Product Launch
- ☐ Turnkey Process Engineering; Technology Transfer

☐ PV&V Center | Verification and Validation

- ☐ Endurance/Life Cycle Testing
- ☐ Extreme Load Testing
- ☐ Climatic Testing
- ☐ Ingress Protection Testing
- ☐ Salt Spray Test
- ☐ Destructive & ND Weld Test
- ☐ Dimensional Inspection
- ☐ Coordinate Measuring Inspection

**Product Verification and Validation Process*



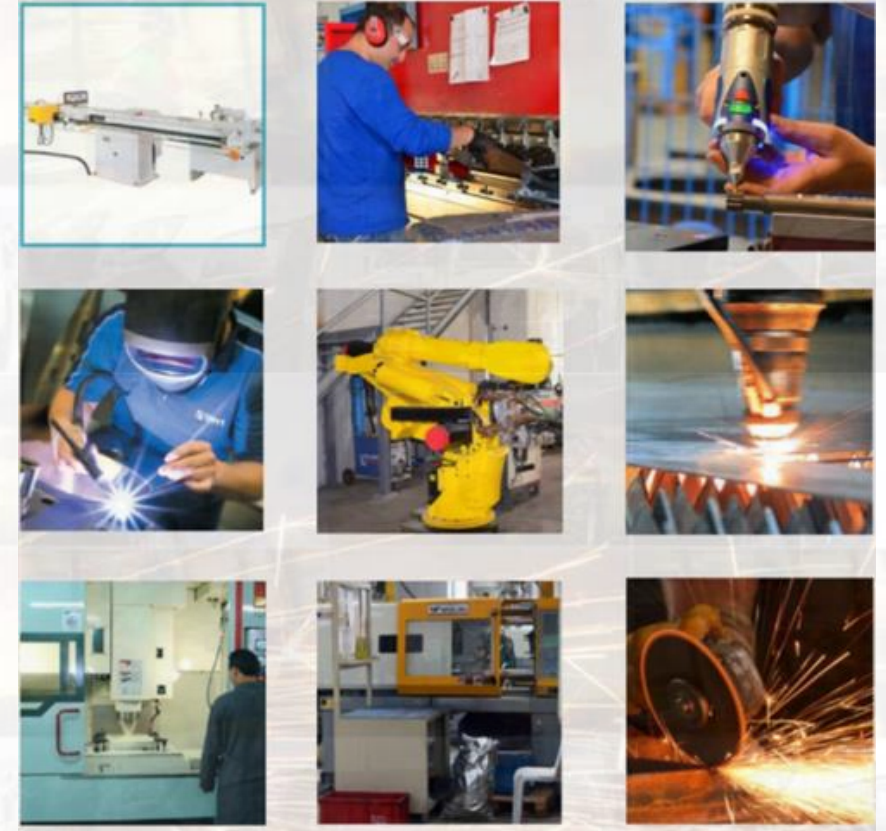


Production, a Visual Factory

A fully transparent visual factory with real-time production monitoring, namely 'MAS Manufacturing Execution System'.

☐ Manufacturing Capabilities

- ☐ Tool Making
- ☐ CNC Machining
- ☐ Custom Metal Stamping;
 - Progressive Die Stamping
 - Deep Draw Stamping
 - Short Run Stamping
- ☐ CNC Press Brake
- ☐ CNC Tube Bending
- ☐ CNC Laser Cutting
- ☐ Injection Molding
- ☐ Robotic Welding and Assembly
- ☐ Mechanical Assembly





Quality Infrastructure

Quality Policy

Our quality policy is based on TQM to understand our employees and all our stakeholders. We are committed to continuous improvement and aim to using innovative technologies, in order to meet international standards, customer expectations and beyond.

Certificates

- ☐ IATF 16949:2016 Quality Management System
- ☐ ISO 9001:2015 Quality Management System
- ☐ ISO 14001:2015 Environment Management System
- ☐ ISO 45001:2018 Occupational Health and Safety
- ☐ ISO/IEC 27001:2005 Information Security Management System
- ☐ EN ISO 3834-2 (Underway)





Outline

☐ About Us

Who we are & Quick Overview
Our Mission & Vision
Industries
Customers

☐ Product Programme

Steering Solutions
Access Controls
Motion Controls
Welded Fabrication

☐ Capabilities

Design-Engineering and PV&V
Production
Quality Infrastructure

☐ Global Footprint

Getting Global
Locations

☐ Thank you. Q&A





Global Footprint



Turkey:

ILERI, Inc.

TOSB Automotive District

Str 13 No 5-1 Cayirova, Kocaeli 41480



United States:

ILERI Group, Inc.

901 Mittel Dr.

Wood Dale, IL 60191





ilerigroup.com

Thank you!

Q&A

ILERI A.S.

TOSB Automotive (OSB) District
13. Sk No: 5-1 Sekerpinar
Kocaeli 41480
Turkey

ilerigroup@ilerigroup.com

ILERI Group, Inc.

901 Mittel Dr.
Wood Dale, IL 60191
USA

info@ilerigroup.com

